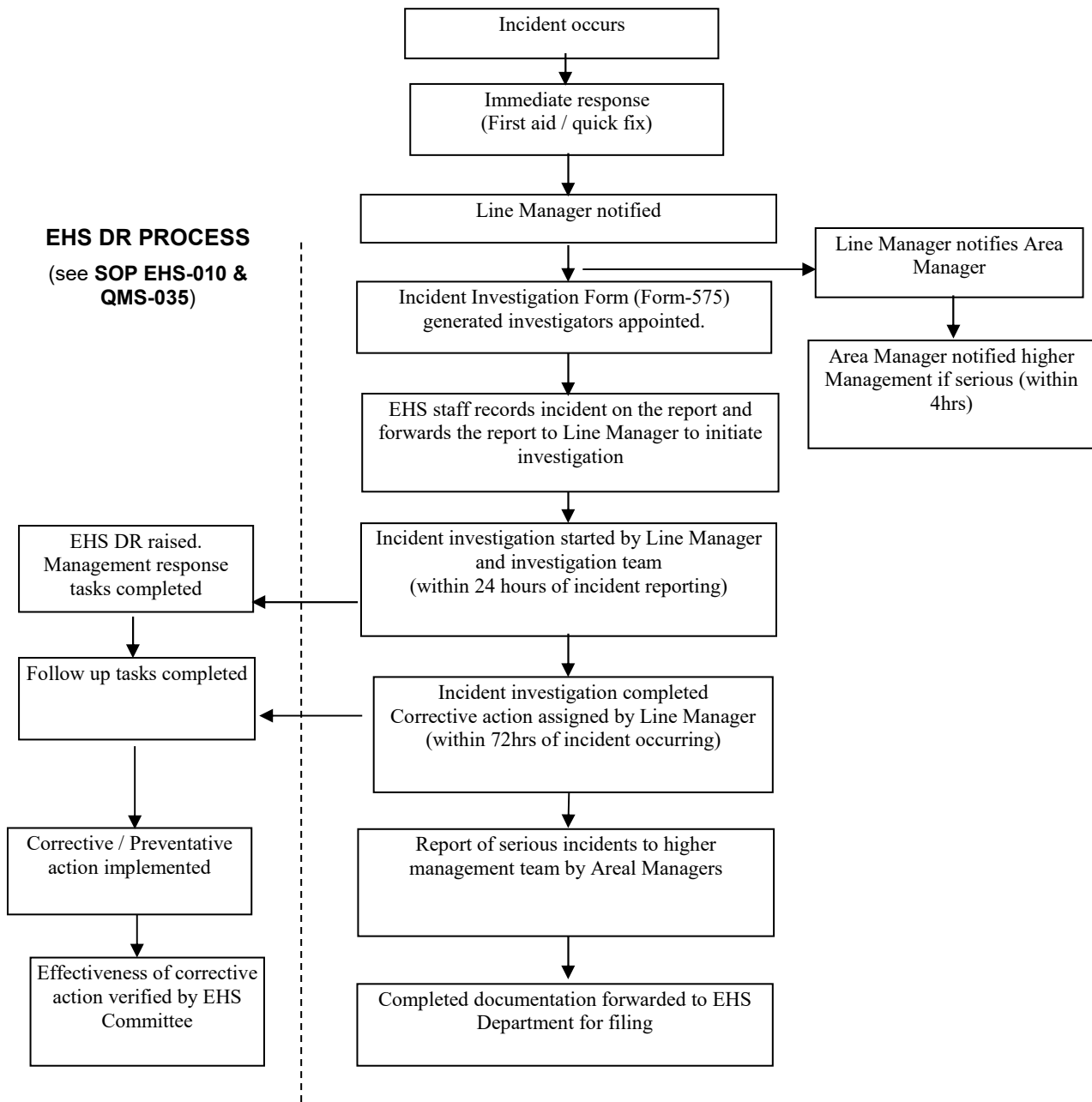


**Appendices-1 Incident Reporting/Investigating Flowchart  
(Injuries, Unusual Incidents, Losses of Containment)**



**Notes:** Incident investigation team should include work team and any other personnel involved in the incident, plus any other personnel considered useful to the investigation process. The team **must** include EHS Committee member. It remains the responsibility of the Line Manager to ensure that all corrective actions are communicated to those who have assigned tasks.

- All Corrective actions are completed by nominated dates and findings of such actions documented.