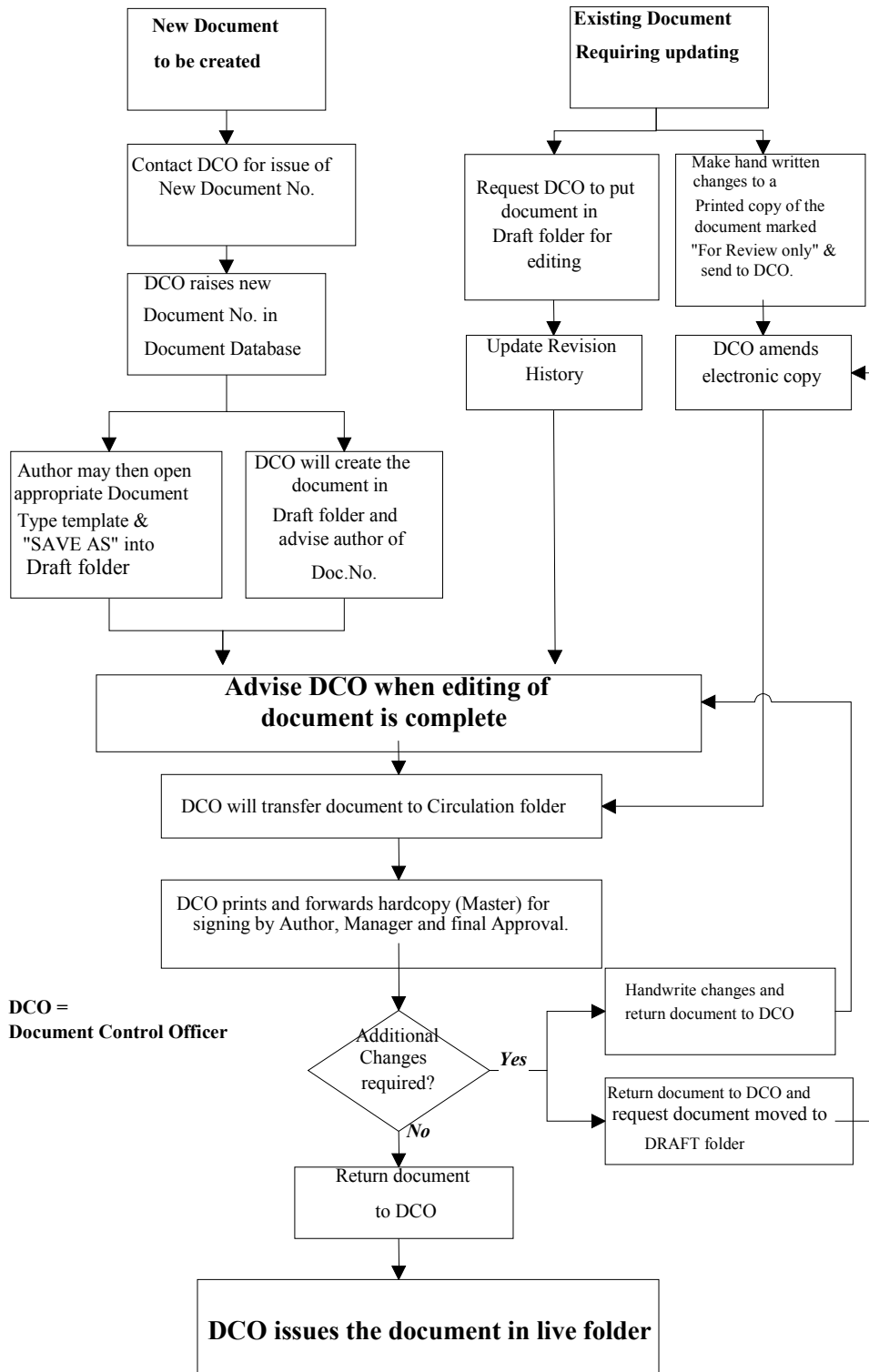
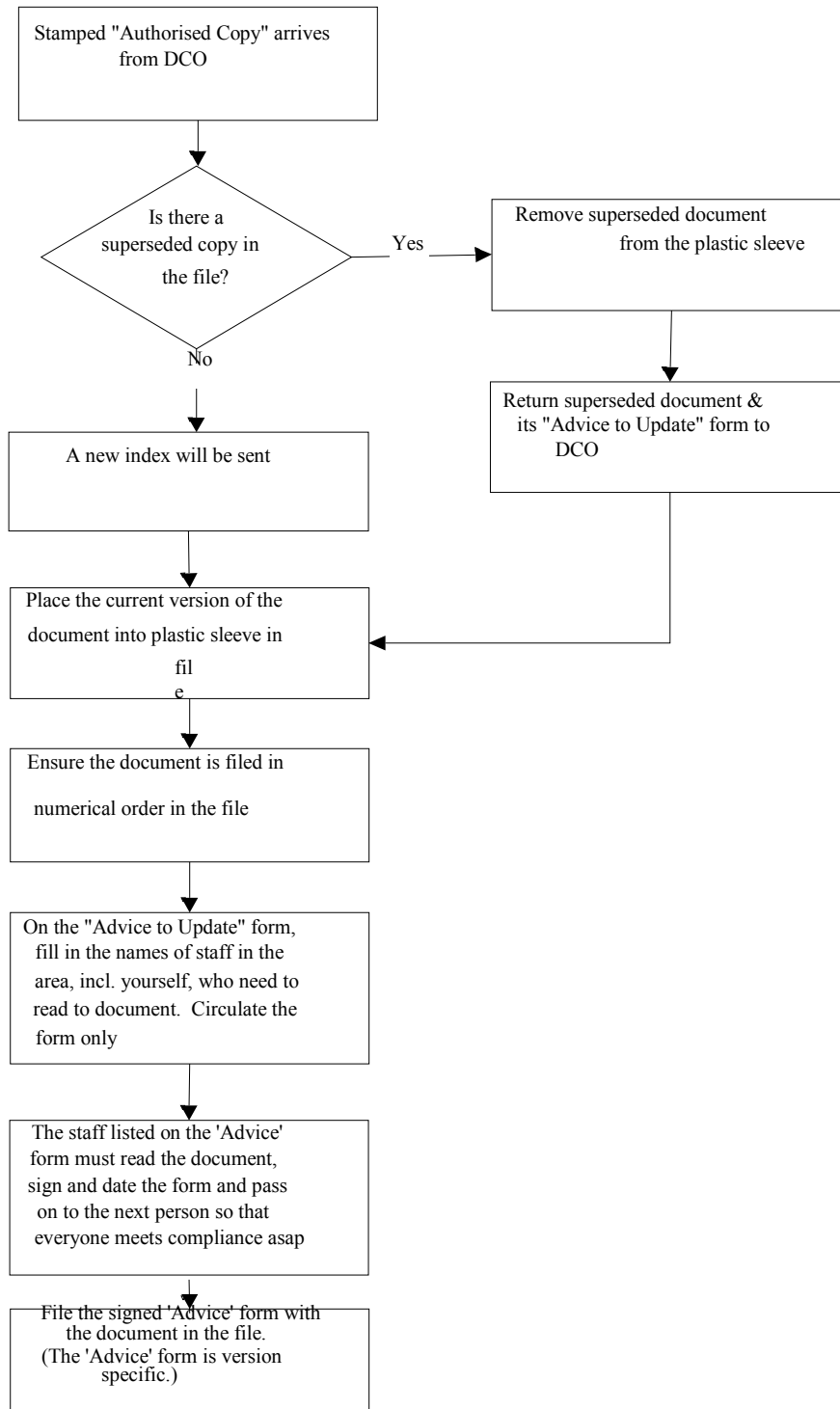


QMS-015 Quality Documentation Management and Change Control

3.3 Flowchart - Creation or Modification of Quality Documentation



Appendix 3 - Administration of Satellite Documentation Files



Note: If the document is to be placed other than in the Satellite File, a **Form-405** must be printed and filled in and placed in the Satellite file so the remote document can be located in future.